

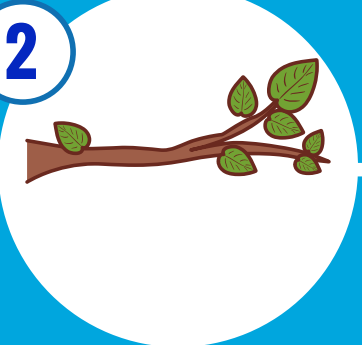
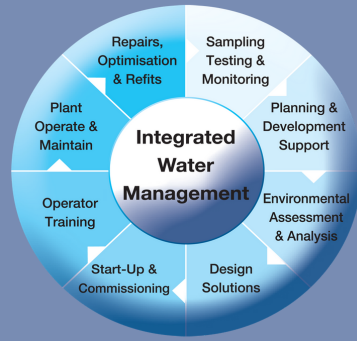


Simmonds & Bristow Presents

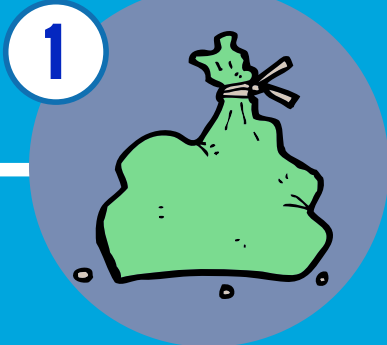
THE STORMWATER SUMMER READINESS GUIDE



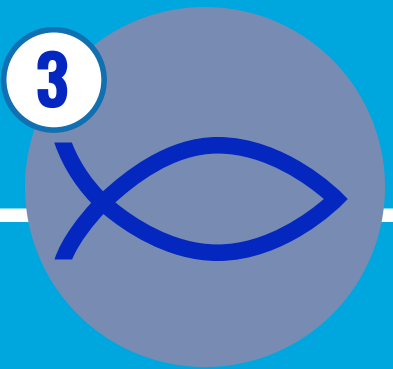
HERE FOR YOU
50+
YEARS
SINCE 1965



2
Clear away obstructions that could divert/prevent stormwater from flowing where it needs to.



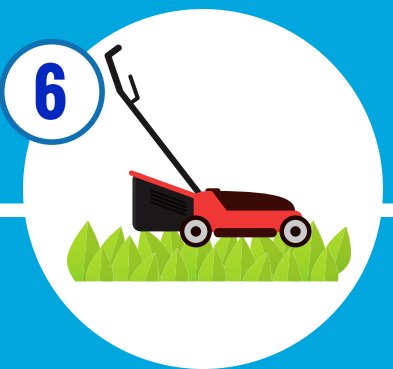
1
If you have wetlands/water retention basins, make sure you clean out weeds, litter and overgrowth. Also try to refresh sand and plantings.



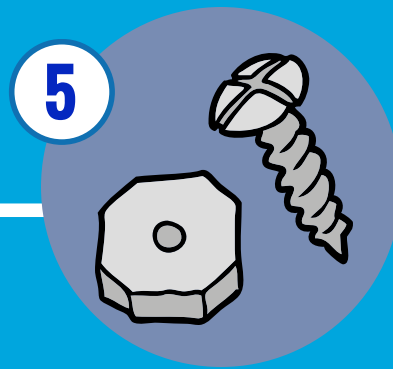
3
Be ready for fish kills and be prepared to harvest them so they don't disturb the general public.



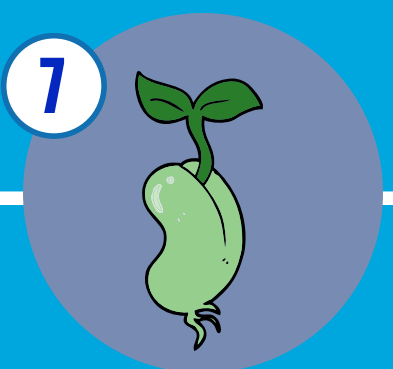
4
Dust off (or prepare!) a stormwater management plan.



6
Prep your stormwater network! Do the mowing and clean out your sediment basins and gross pollution traps. Make sure you clean them out after storms!



5
Check that all of your earthwork and sampling equipment is functional and make any repairs!



7
Re-seed your bio-detention basin.

