



Simmonds & Bristow Presents

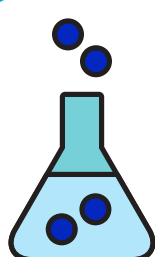


THE WWTP OPERATOR'S GUIDE TO GETTING SUMMER READY

HERE FOR YOU
50+
YEARS
SINCE 1965



2



Heavy up your sludge (for faster settling) by adding zeolite now. Dose bentonite and kalon into your clarifier to provide extra weight to the floc to avoid roll-over during storms.

1



If you have storage ponds, make sure you get them down, ready for summer rain to fill them up!

3



Mow your irrigation areas. Watch out for broken irrigation heads (and be careful not to damage any more!). Fix any that are broken.

4



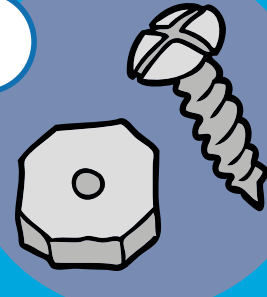
Do more regular testing to see (and allow you to deal with!) changes to water quality. Consider putting together an algae management plan.

6



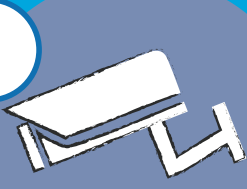
Get caught up on needed repairs.

5



Grout in or bolt down your man-hole covers to prevent leaks.

7



Conduct CCTV and smoke pot inspections to eliminate breaks and cross-connections. Make sure all of your pipes are connected correctly. Identify crush points where roots can get in.

