





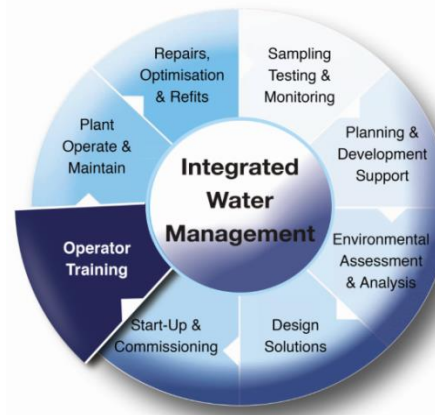
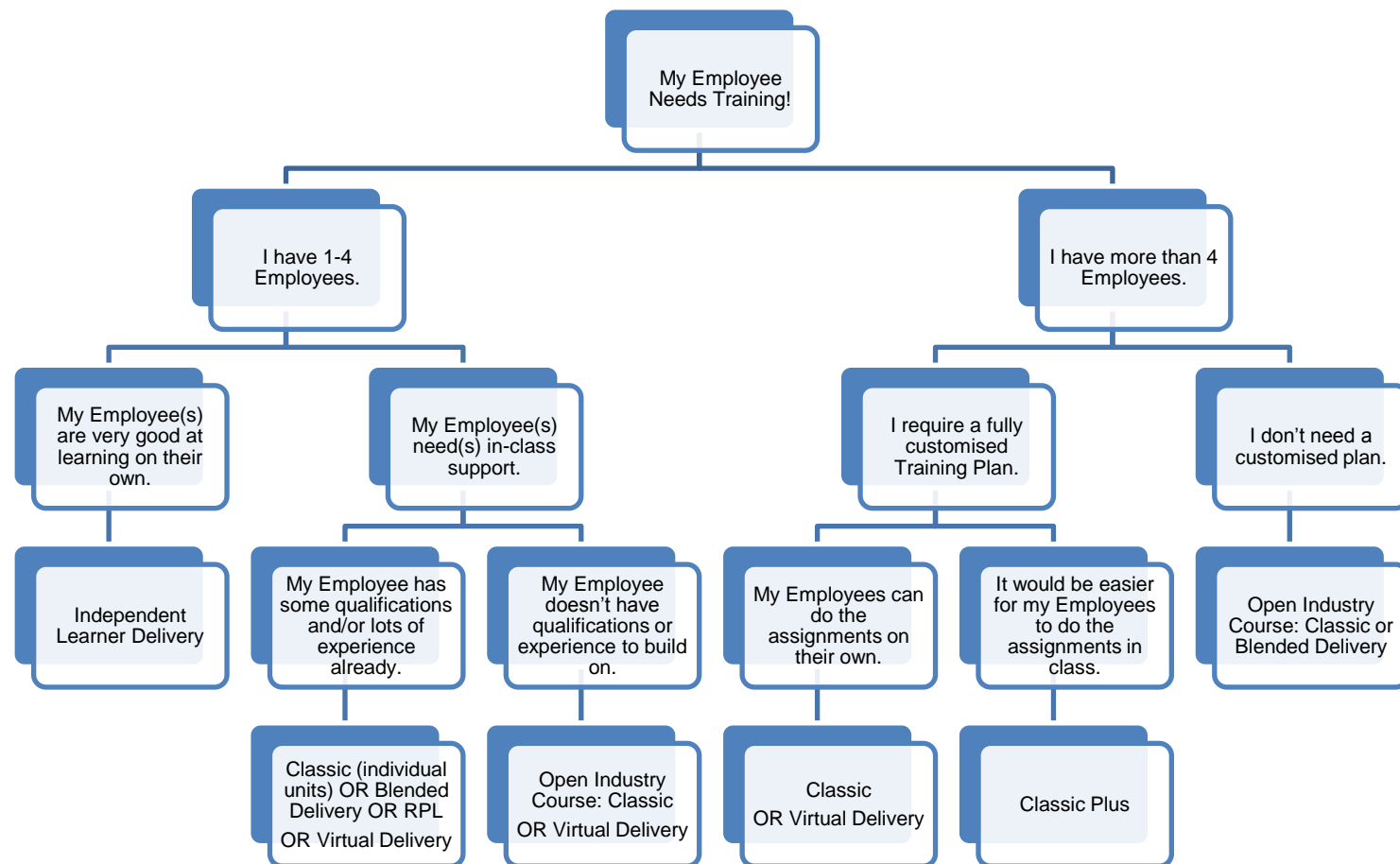




What is the best training delivery method for you?	RECOGNITION OF PRIOR LEARNING 	INDEPENDENT LEARNER 	BLENDED 	CLASSIC 	VIRTUAL 	CLASSIC PLUS 
Description of Delivery Methods	Perfect for those who already have the skills and experience but lack the paperwork to back it up. Share the evidence with our trainers and you can be recognised for what you already know! Work Readiness Assessment (WRA) required.	Ideal for those of you who are content to work on your own, with high quality support from the trainer at your fingertips. Delivered via correspondence, this method is for individuals and offers great value and flexibility for the right learners. A work readiness assessment (WRA) is still required.	This method is the happy medium between the CLASSIC and INDEPENDENT LEARNER methods. You'll complete some (but not all) of your training face to face with your trainer and some (but not all) independently via correspondence. As always, Work Readiness Assessments (WRA) are required.	Our CLASSIC face to face training remains a cornerstone of our portfolio. This is the S&B that many of you have experienced, delivered 100% face to face with your trainer. This training is ideal for groups (with a minimum of 6 learners). All learners must complete a work place readiness assessment (WRA).	A new way to learn virtually! Our virtual class room is just like Face to Face but online with our experienced and qualified trainers support. It's a great way to accelerate your learning. Attend virtual sessions, send in your completed assignments, get assessed, once passed we issue nationally recognised statement of attainment. Work Readiness Assessment (WRA) must follow.	A delivery method that sees you learn face to face with your trainer, with added in-class time for you to complete your assignments. This is a great option for groups who struggle to fit out of class "homework assignments" into busy schedules. Work Readiness Assessment (WRA) must follow.
WHAT IS INCLUDED WITH MY TRAINING?						
Taught by Experienced Industry Trainer	RPL is available and relies on the same experienced S&B industry trainers. Each RPL Candidate is assessed against his/her own mix of experience, skills and previous education/training to determine if any or all units for the required certification can be bypassed.	✓	✓	✓	✓	✓
Learner Resource Book Provided		✓	✓	✓	✓	✓
On-Going Support		✓	✓	✓	✓	✓
Backed by Full S&B Team		✓	✓	✓	✓	✓
Face to Face		✗	✓ Partial Only	✓	✓ Online Virtual Only	✓
Assignments Completed In-Class With Trainer		✗	✗	✗	✗	✓
Work Readiness Assessment Required	✓	✓	✓	✓	✓	✓
Work Readiness Assessment Included (Price based on Remote WRA, if Remote conditions are unable to be met, additional cost for On-Site WRA will apply)	✓	✓	✓	✓	✓	✓
Available for Individual Enrolment	✓	✓	✓	✗	✓	✗
Full Fee For Service Available	✓	✓	✓	✓	✓	✓
Corporate Group Rate Available	✓	✓	✓	✓	✗	✓
Appropriate for International Groups	Case by Case Consideration	N/A	✓	✓	✓	✓
Qualification Courses	✓	✓	✓	✓	✓	✓
Workshops	N/A	✗	✗	✓	✓	✓
Short Courses	N/A	✓	✓	✓	✓	✗
Individual Units of Competency	✓	✓	✓	✓	✓	✓
Custom Delivery Setting Available	✓	N/A	✓	✓	✓	✓
Open Industry Delivery Setting Available	N/A	N/A	✓	✓	N/A	✗
ADD-ONS						
On-Site Work Readiness Assessment (mandatory if conditions for Remote WRA cannot be met)	✓	✓	✓	✓	✓	✓



What Is The Best Delivery Method For Me/My Employee(s)?

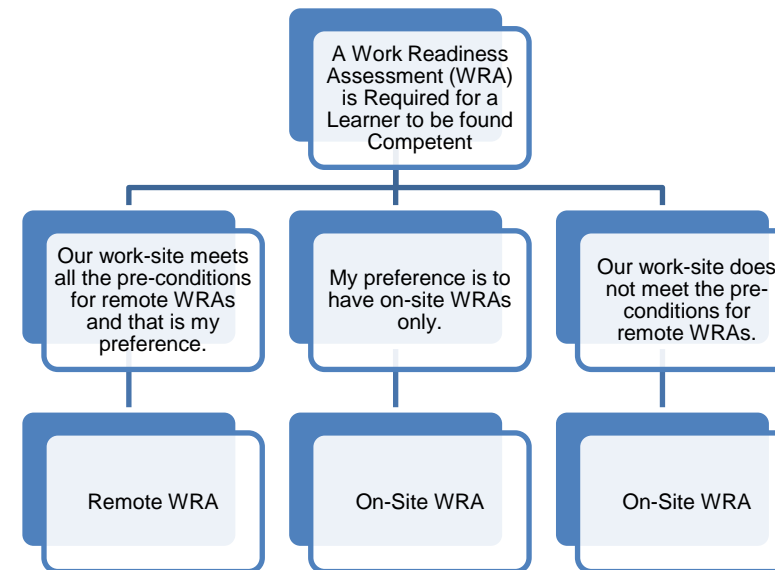


Virtual Delivery of Classic available to sites/students with appropriate IT hardware and bandwidth

I'll Want to Remember that the S&B Training Team Can Help Me To....

- Identify the right courses, workshops or individual units of competency to meet my needs.
- Select the best delivery method for my situation.
- Build a customised training plan.
- Identify possible sources of government funding.
- Walk through the enrolment process.
- Talk through what I'll get out of my training.

What Will the Final Assessment Look Like?



It Can Be A Remote WRA When...

- It is the Employer Preference AND
- Remote Technology Fits AND
- Key Stakeholders confirm acceptance AND
- All required work completed AND
- The Trainer Signs Off

An On-Site WRA is Required If...

- It is the Employer Preference
- Remote Conditions Aren't Met
- The Trainer Can't Sign Off

*On-Site WRAs can sometimes offer greater efficiency than Remote WRAs. If that is the S&B recommendation, it will be discussed upfront.

Simmonds & Bristow Offer the Following Accredited Qualifications:

Certificate II in Water Industry Operations (NWP20119)



Certificate III in Water Industry Operations (NWP30219)



Certificate IV in Water Industry Operations (NWP40515)



Certificate IV in Water Industry Treatment (NWP40615)



Diploma of Water Industry Operations (NWP50118)

